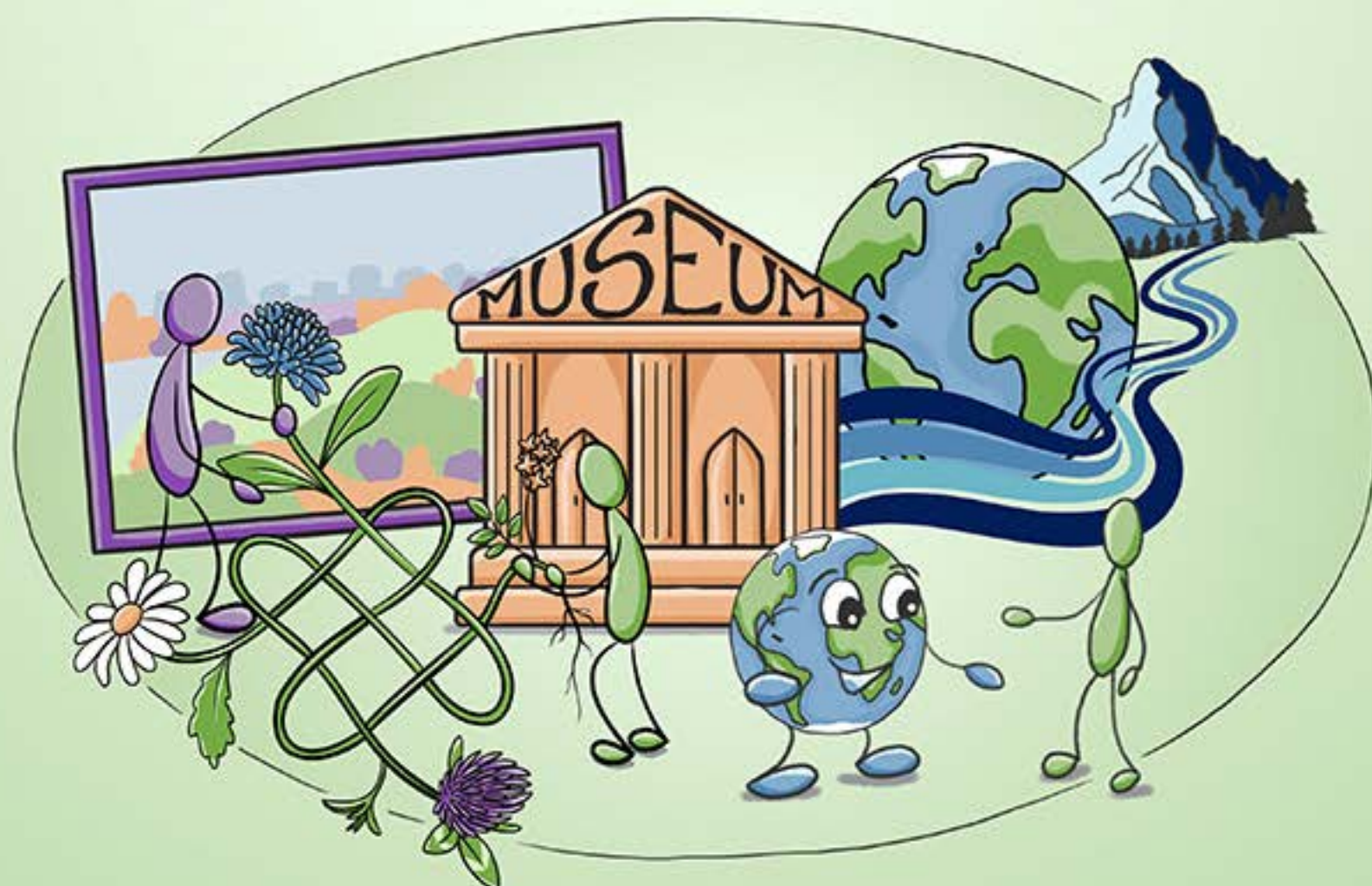


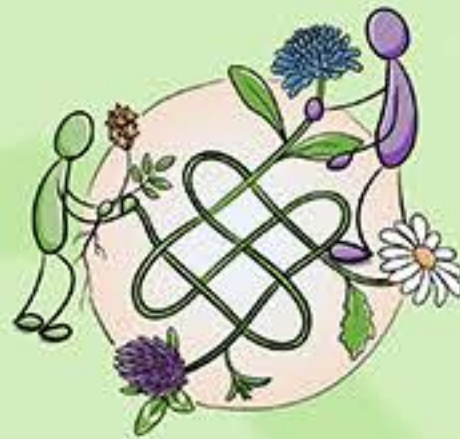
ART is Ecology

Whether you think like an artist, a scientist, or both, your local museum has it all. Go on a field trip to try out a new perspective.

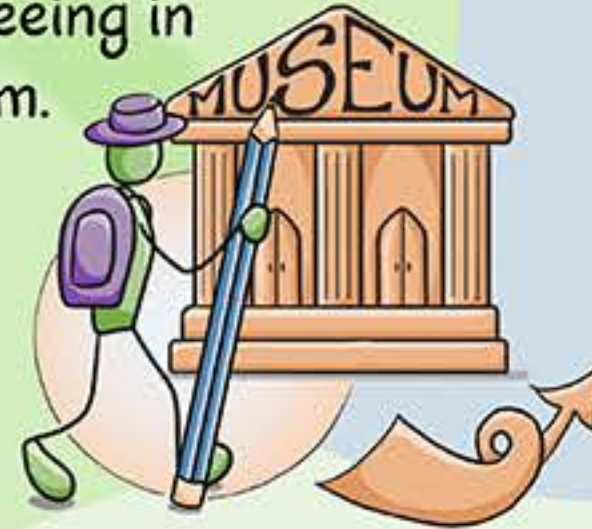


Illustrated by
Vicky Bowskill

Ecology is the study of how species & their environment are connected.



You can combine these ways of seeing in a museum.



Choose your



What are you looking for?

You can learn more by looking at different scales.



Connections & Patterns

Artists look at how objects & ideas are connected.

How to be an

ARTISCIENTIST

Whether you are in a museum or out in nature.



Slow Looking

helps you see details & peer into the past.

Take your Time



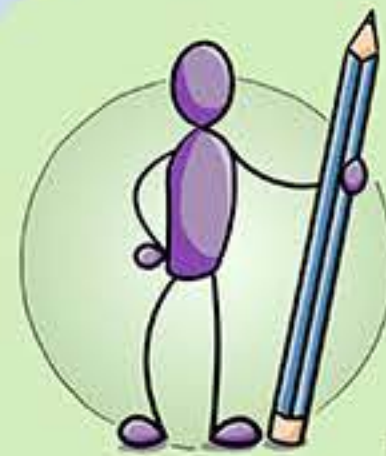
natural pigments
wooden handles
hair bristles



Artists use nature as inspiration & materials.

Scientists have always used images to record and learn from observations.

Artists & Ecologists both have a good eye for observing the world.



We can combine these ways of seeing



to learn more about our past...and our future.

Record



Capture details, observations & ideas in notes or artwork.

By thinking like an artist AND a scientist,

we can take better care of our planet?



Plan Your Museum Expedition

What is your 'frame' or focus for the trip?

e.g. choose a favourite animal, plant, landscape, or a natural material used by artists you are looking for.



What scale are you looking at?

e.g. 'zoomed out' to count overall numbers of things, or 'zoomed in' to focus on detail?



How will you record your trip?

e.g. will you make sketches, written notes, mind maps, or photographs of what you've put 'in frame'?



What connections did you find?

Try to spot things in nature that you saw on this expedition and remember that 'art is ecology'!

